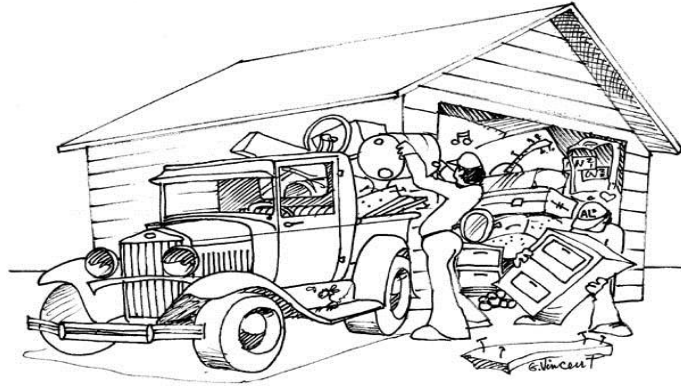


# GOODBYE JUNK!



**226 668 1503/ [goodbyejunk@live.ca](mailto:goodbyejunk@live.ca)**

## **Bin Rental Period, Schedule & Pricing**

Standard 12 yard bin rental includes delivery & pick-up. Bin is weighed in & weighed out of the Landfill. Customer is charged for the Landfill cost plus the cost of the Bin Rental & HST.

Size of Bins are 14 Ft long x 6 Ft wide x 4 Ft high.

Bin Rentals from 1 - 5 days, if you need a bin longer than the 5 day period, it's \$10.00 per day.

If you are finished with the bin before the 5 days please let us know & we will schedule the bin for the earliest pick-up

If you would like to extend your date of pick-up, please call 24 hours in advance to confirm the change.

**FOR BIN PICK-UP** – Doors must be shut tightly, the load is level & not above the sides of the bin, so tarp covers bin evenly. Nothing is blocking the bin from being removed from the site – **Which could result in your bin not being picked up & an extra fee may be charged for a second attempt**

## **Bin Placement**

Our bins should be placed on a hard flat surface e.g., a concrete, asphalt or gravel driveway. Bins can be placed on grass or soft ground areas but will only be placed in areas if specifically advised to do so by the customer. **Any expenses related to damage incurred as a result of placing a bin on concrete, asphalt, gravel, grass or soft ground is solely the responsibility of the customer.**

## **Hazardous Waste**

# **GOODBYE JUNK!**

No Hazardous Waste of any kind should be placed in the Bin! – Surcharges will be applied if hazardous materials are found in the Bin. Costs could be high!

Examples of Hazardous waste are – Paints, Aerosoles, Fertilizers, Cleaners, Chemicals & Batteries are a few. If you are unsure whether a particular material qualifies as hazardous waste please contact your local Municipal Office or our office.

## **Extra Charges that the landfill has set fees for**

Tires on rims, Refrigerators, Freezers & Air Conditioners (& any other item with Freon), Mattresses & Box Springs.

## **Clean Fill**

Dirt or Masonry Products (e.g. bricks or concrete) should be put in a different bin

## **Billing Process**

Invoice totals will be calculated once the bin has been picked up & the contents weighed at the landfill, plus the Bin Rental cost itself with HST.

**CUSTOMER -----**

**ADDRESS -----**

Customer has read & agreed to follow the terms on these Fact Sheets for the Bin Rental & understands what can & cannot be put into GOODBYE JUNK'S Bins for GREY/BRUCE Municipal Landfills.

**SIGNATURE & DATE**